

CHAPTER

31

**INDICATING/
RECORDING
SYSTEMS**

CESSNA®
MODEL 208
ILLUSTRATED PARTS CATALOG

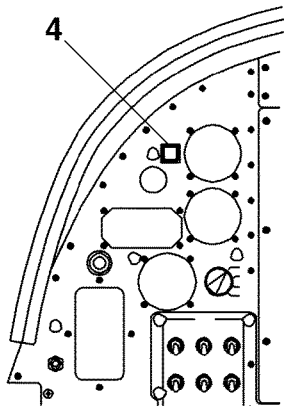
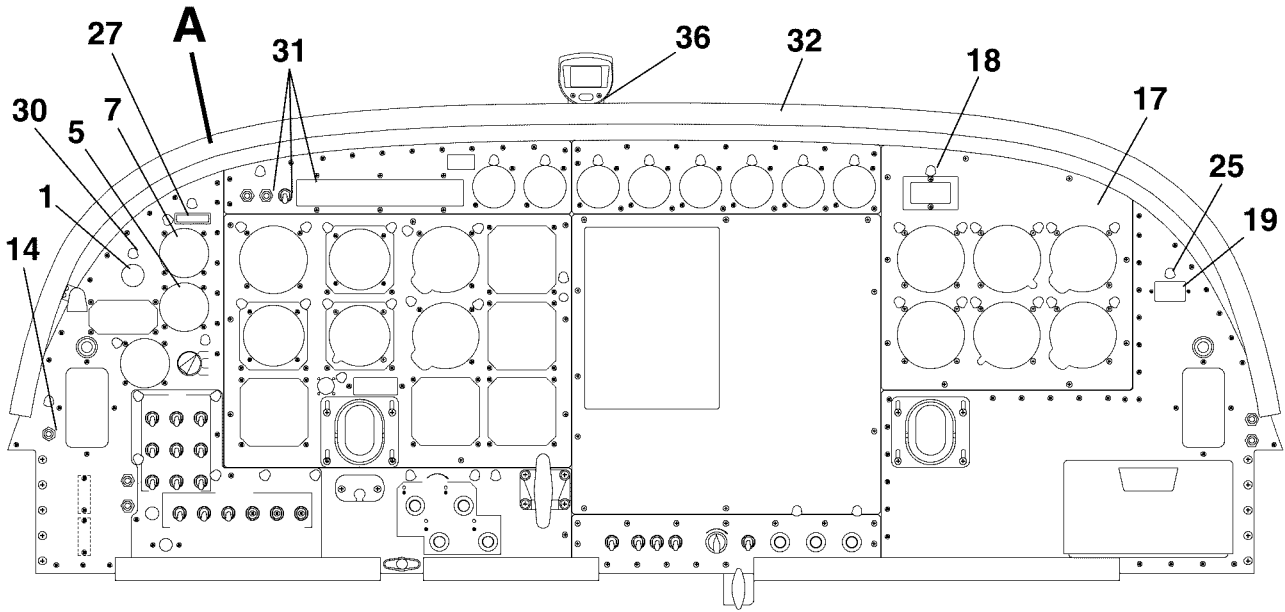
CHAPTER SECTION SUBJECT		NUMBER OF PAGES	DATE
31 - TITLE			
31 - LIST OF EFFECTIVE PAGES			
31 - RECORD OF TEMPORARY REVISIONS			
31 - TABLE OF CONTENTS			
31-00-00	Figure 01	2	Mar 1/2020
31-00-00	Figure 01A	4	Mar 1/2020
31-00-00	Figure 02	6	Apr 1/2016
31-00-00	Figure 03	2	Dec 1/2013
31-00-00	Figure 04	2	Jun 1/2010
31-30-00	Figure 01	4	Mar 1/2020
31-30-00	Figure 02	4	Mar 1/2020
31-30-00	Figure 02A	4	Mar 1/2020

CESSNA®
MODEL 208
 ILLUSTRATED PARTS CATALOG

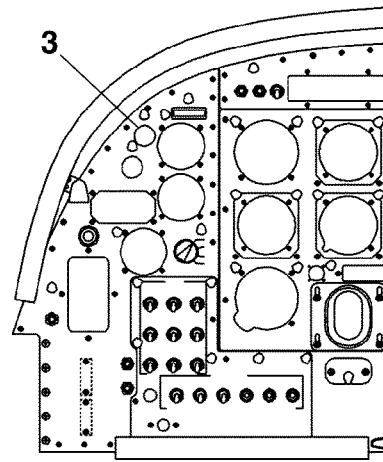
<u>SUBJECT</u>	<u>CHAPTER SECTION SUBJECT</u>	<u>FIGURE</u>	<u>EFFECTIVITY</u>	
			<u>START</u>	<u>END</u>
INSTRUMENT PANEL EQUIPMENT- NOT APPLICABLE TO CARGOMASTER	31-00-00	01	0001	& ON
SWITCH PANEL ASSEMBLY	31-00-00	01A	0500 B2000	& ON & ON
INSTRUMENT PANEL EQUIPMENT - APPLICABLE TO CARGOMASTER NOT APPLICABLE TO CAT II AIRPLANES	31-00-00	02	B0001	& ON
INSTRUMENT PANEL EQUIPMENT - CAT II AIRPLANES	31-00-00	03	B0044	B0179
FLIGHT HOUR RECORDER INSTALLATION	31-00-00	04	0500 B2000	& ON & ON
FLIGHT DATA RECORDER	31-30-00	01	B1215	& ON
COCKPIT VOICE DATA RECORDER INSTALLATION	31-30-00	02	0524 B2226	& ON & ON
COCKPIT VOICE DATA RECORDER INSTALLATION	31-30-00	02A	B5000	& ON

CESSNA®
MODEL 208
 ILLUSTRATED PARTS CATALOG

A24920



DETAIL A
 BRITISH CERTIFIED AIRPLANES



DETAIL A
 FRENCH CERTIFIED AIRPLANES

NOT APPLICABLE TO CARGOMASTER

INSTRUMENT PANEL EQUIPMENT- NOT APPLICABLE TO CARGOMASTER
 FIGURE 01 (SHEET 1)

2618T1015
 A2618T1069
 A2618T1010

CESSNA®
MODEL 208
ILLUSTRATED PARTS CATALOG

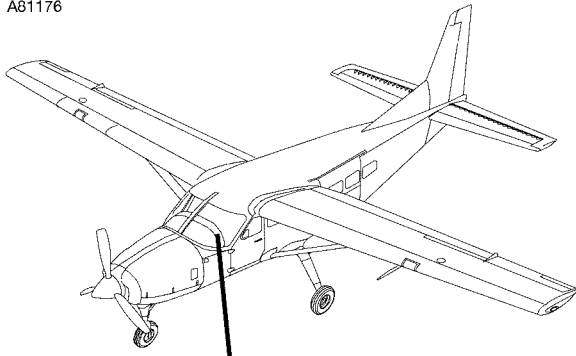
FIG ITEM	PART NUMBER	NOMENCLATURE	UNITS PER ASSY		
			1	2	3
01		INSTRUMENT PANEL EQUIPMENT- NOT APPLICABLE TO CARGOMASTER	0001	& ON	RF
-		. GAGE-PROP DEICE AMMETER	0001	0499	01
1	C662503-0109	. COVER W/O PROP ANTI-ICE GAGE FSO 2513700-23	0001	0154	NP
- 2	2513700-1	. COVER W/O PROP ANTI-ICE GAGE	0155	0499	01
- 2A	2513700-23	. GAGE-PITOT AMMETER REFER TO NOTE 2	0140	0499	01
3	S2852-1	. INDICATOR-STANDBY ALTERNATOR OVERHEAT REFER TO NOTE 1	V96182	0238	0499
4	4355-16-0001-1	. INDICATOR-CHIP DETECTOR SPERRY AUTOPILOT REFER TO 79-30-00 FIGURE 01			01 R RF
- 4A		. GAUGE-SUCTION			01
5	C668540-0102	. SCREW GAUGE ATTACH			04
- 6	MS35214-29	. ELECTRIC CLOCK	0001	0352	01
7	C664508-0201	. CLOCK-ELECTRIC ALT FOR C664508-0201	0001	0352	01
- 7A	C664508-0202	. QUARTZ CHRONOMETER	0353	0499	01
- 8	C664511-0102	. ATTACHING PARTS			
- 9	MS35214-29	. SCREW	0001	0352	04
- 10	MS35214-25	. SCREW	0353	0499	04
		—*—			
- 11		. DELETED-NOT USED			
- 12	S2413-1	. LAMPHOLDER-USED WITH ASTROTECH CLOCK			01
- 13	MS25231-1819	. BULB USED WITH ASTROTECH CLOCK			01
14	0511063	. SWITCH-PROP OVERSPEED			01
- 15	0511063-2	. NUT			01
- 16	10C1015	. GUARD-PROP OVERSPEED SWITCH TRUE AIRSPEED INSTL	V81073		01
17		. RH FLIGHT PANEL INDICATORS REFER TO 34-10-00 FIGURE 04			RF
18		. FUEL INDICATING SYSTEM REFER TO 28-41-00 FIGURE 01			RF
19	C664503-0101	. HOURMETER-FLIGHT RECORDER			01
- 19A	C664503-0104	. HOURMETER-FLIGHT RECORDER ALT FOR C664503-0101			01
		. ATTACHING PARTS			
- 20	MS35214-27	. SCREW			02
- 21	MS35333-105	. WASHER			02
- 22	AN340B6	. NUT FSO MS35649-265			NP
- 22A	MS35649-265	. NUT			02
		—*—			
- 23	2513700-29	. COVER W/O HOURMETER			01
- 24	S1021A6-6B	. SCREW			02
25	MS35214-40	. SCREW-USED W/O POSTLIGHT			01
- 26	MS20364-832C	. NUT-USED W/O POSTLIGHT			01
27	5119404-2	. PLACARD-AIRCRAFT IDENT NUMBER			01
- 28		. DELETED-NOT USED			
- 29		. DELETED-NOT USED			
30		. INSTRUMENT PANEL LIGHTING REFER TO 33-10-00 FIGURE 01			RF
31		. ANNUNCIATOR PANEL & SWITCHES REFER TO 33-10-00 FIGURE 02			RF
32	2613358-1	. GLARESHIELD ASSY FSO 2615200-201	0001	0236	NP
- 33	2615161-201	. GLARESHIELD ASSY SPARES FSO 2615200-201	0001	0236	NP
- 33A	2615200-201	. GLARESHIELD ASSY SPARES	0001	0236	01
- 34	2615161-1	. GLARESHIELD ASSY FSO 2615200-1	0237	0499	NP
- 34A	2615200-1	. GLARESHIELD ASSY SPARES	0237	0499	01
		. ATTACHING PARTS			
- 35	NAS221-6	. SCREW	0001	0236	13
- 35A	CM3558-8-8G	. SCREW	0237	0499	08
- 35B	MS35214-24	. SCREW	0237	0499	03
		—*—			
36	0513264-1	. BRACKET-COMPASS MOUNTING	0001	0236	01
- 37	MS35214-27	. SCREW-BRACKET COMPASS ATTACH	0001	0236	03
- 38	MS21048L06	. NUTPLATE-BRACKET COMPASS ATTACH	0001	0236	03
- 39	MS35206-243	. SCREW	0001	0236	08
- 40	MS21047L08	. NUTPLATE	0001	0236	08
- 41	MS21047L06K	. NUTPLATE	0001	0236	02
- 42	2613360-2	. COVER-GLARESHIELD ATTACH ANGLE	0001	0236	01
- 43	2615161-6	. ANGLE ASSY-GLARESHIELD	0001	0499	01
- 44	5518160-80	. BEAD ASSY-GLARESHIELD	0001	0551	NP
			B0001	B5061	
- 44A	2615162-1	. BEAD ASSY-GLARESHIELD	0552	& ON	01
			B5062	& ON	

NOTE 1—USED ON BRITISH CERTIFIED AIRPLANES

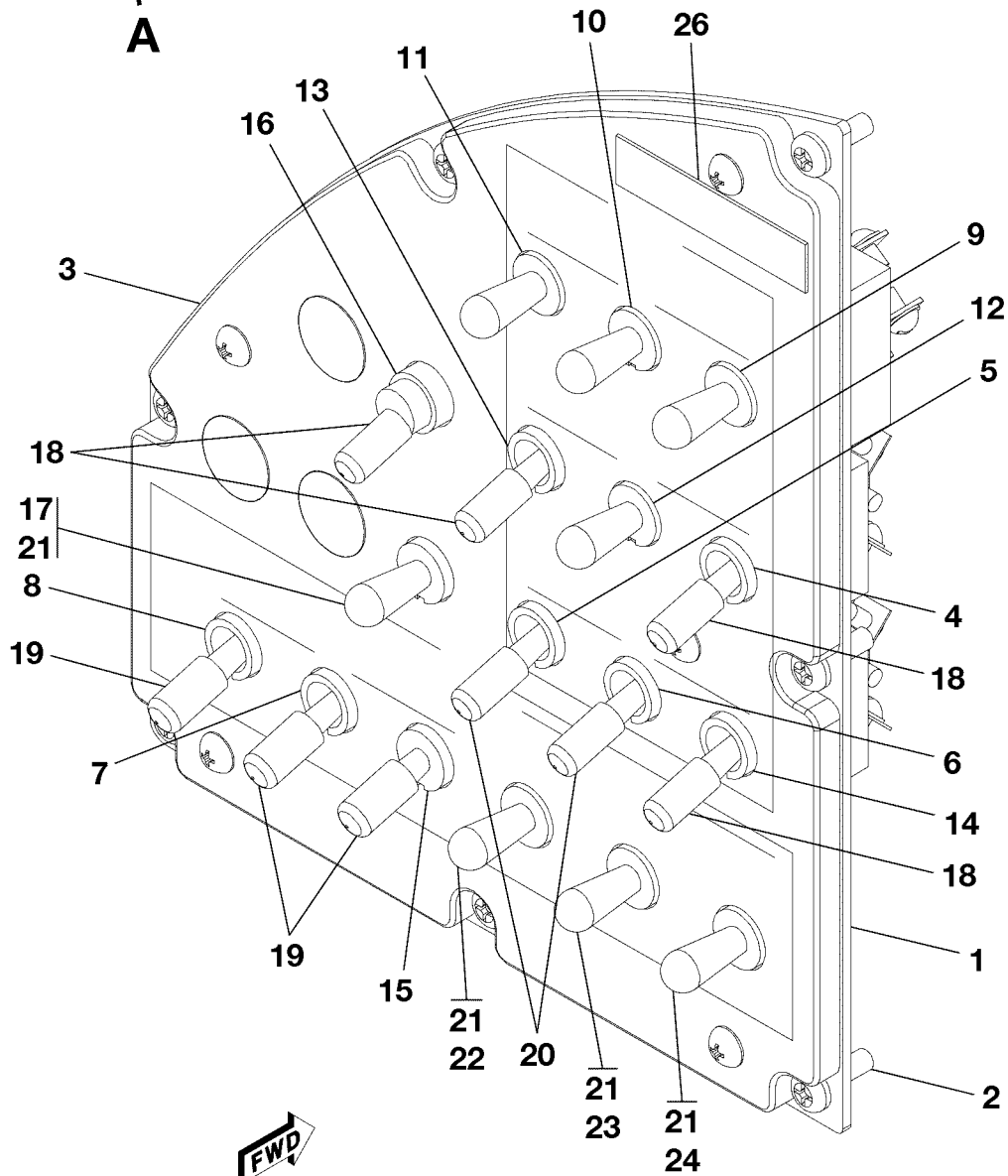
NOTE 2—USED ON FRENCH CERTIFIED AIRPLANES

CESSNA®
MODEL 208
 ILLUSTRATED PARTS CATALOG

A81176



A



DETAIL A

SWITCH PANEL ASSEMBLY
 FIGURE 01A (SHEET 1)

2610T7002
 A2618T1448

CESSNA®
MODEL 208
ILLUSTRATED PARTS CATALOG

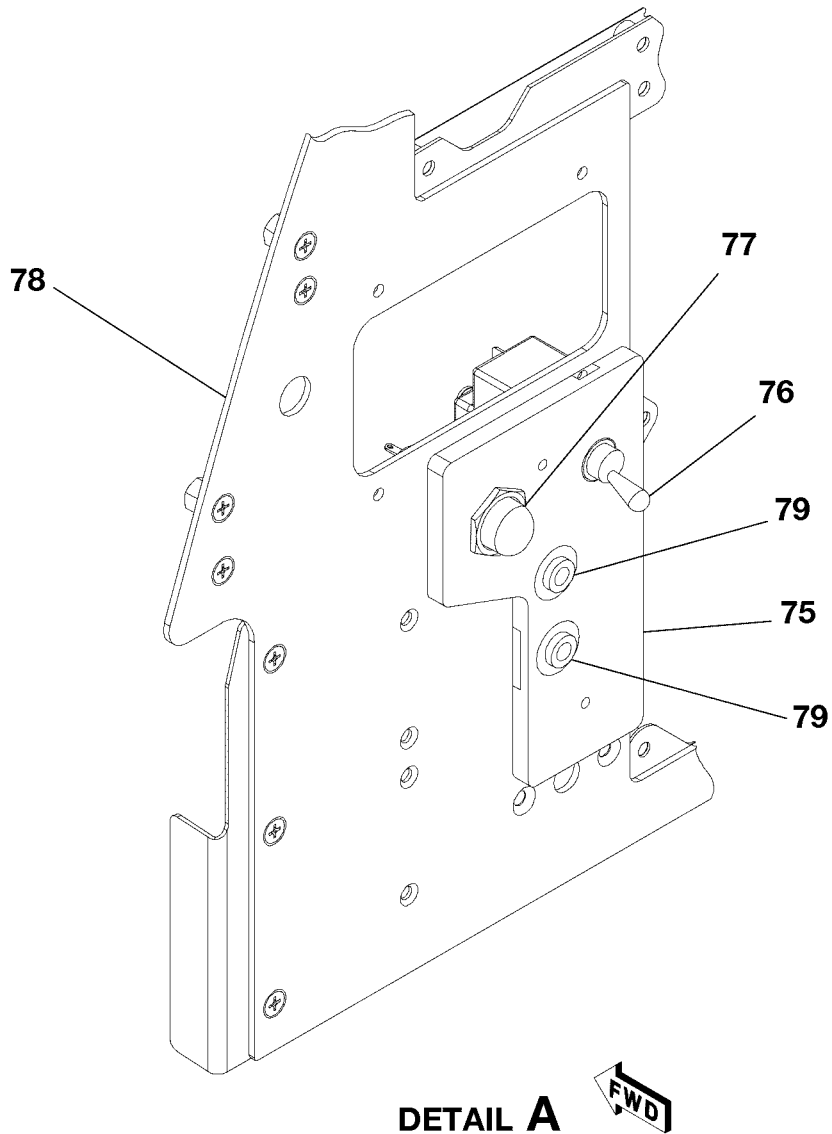
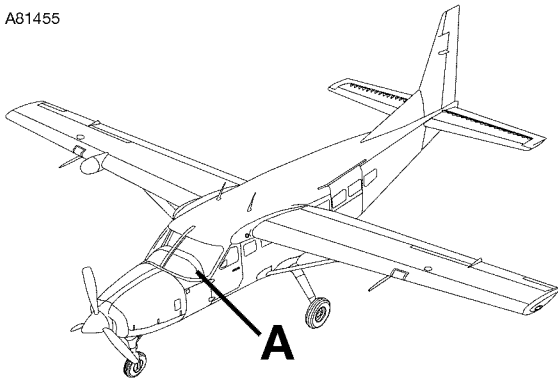
FIG ITEM	PART NUMBER	NOMENCLATURE	UNITS PER ASSY		
			1	2	3
01A		SWITCH PANEL ASSEMBLY REFER TO NOTE 1	0500	& ON	RF
-			B2000	& ON	
1	2670152-3	SWITCH PANEL ASSY	0500	& ON	01
			B2000	B4999	
- 1A	2670152-4	SWITCH PANEL ASSY	B5000	& ON	01
		ATTACHING PARTS			
2	MS35206-245	SCREW			07
		LED SWITCH PANEL REFER TO 33-10-00 FIGURE 01A			RF
3		SWITCH-BCN SI009			01
4	S382-2	SWITCH-NO SMOKE SI010			01
5	S382-2	SWITCH-NAV/EXIT SI035 REFER TO NOTE 2	0520	& ON	01
- 5A	S32T-RO		B2168	& ON	
6	S382-2	SWITCH-SEAT BELT SI011			01
7	S382-3	SWITCH-STALL HEAT SI036	0500	& ON	01
			B2000	B4999	
- 7A	MS24524-23	SWITCH-STALL HEAT SI036	B5000	& ON	01
8	MS35059-23	SWITCH-PITOT/STATIC HEAT SI037	0500	& ON	01
			B2000	B4999	
- 8A	MS24524-23	SWITCH-PITOT/STATIC HEAT SI037	B5000	& ON	01
9	MS25306-222	SWITCH-RIGHT LDG SI014			01
10	MS25307-222	SWITCH-TAXI RECOG SI015			01
11	MS25306-222	SWITCH-LEFT LDG SI016			01
12	MS25307-222	SWITCH-NAV SI017			01
13	S382-2	SWITCH-STROBE SI018			01
14	S382-3	SWITCH-CABIN SI020			01
- 14A	MS35058-27	SWITCH-CABIN W/TIMER SI030	B2000	& ON	01
15	MS35058-30	SWITCH-WING LIGHT SI021			01
16	MS27407-1	SWITCH-POWER OUTLET SI025			01
17	MS25307-312	SWITCH-PROP HEAT SI032			01
18	S2742-10	TIP-WHITE			08
19	S2742-8	TIP-GREEN			03
20	C15WHITE	TIP-WHITE			02
21	C15GREEN	TIP-GREEN	0500	0541	04
			B2000	B2399	
- 21A	S2742-8	TIP-GREEN	0542	& ON	04
			B2400	& ON	
22	MS27407-1	SWITCH-FLUID CONTROL PRIMARY W/TKS SI022			01
23	MS24524-27	SWITCH-FLUID CONTROL MAX FLOW W/TKS SI023			01
24	MS24524-23	SWITCH-FLUID CONTROL BACKUP W/TKS SI024			01
- 25	CM2692-16S2S	PLUG BUTTON			AR
26	1205009-4	PLACARD-A/C ID	0500	0523	01
			B2000	B2242	
- 27	2605079-1	PLACARD - RADIO CALL	0524	& ON	01
			B2243	& ON	
- 28	2677001-6	WBA-LEFT SWITCH PANEL	0500	0572	01
			B2000	B4999	
- 28A	2677004-6	WBA-LEFT SWITCH PANEL	B5000	& ON	01
- 28B	2677001-14	WBA-LEFT SWITCH PANEL	0573	0663	01 R
- 28C	2677001-15	WBA-LEFT SWITCH PANEL	0664	& ON	01 R

NOTE 1—THIS FIGURE CONTAINS PRODUCTION PARTS AND ASSEMBLIES INSTALLED WITH THE TKS AND/OR LOW AIRSPEED AWARENESS (LAA) SYSTEMS. TO ORDER PARTS FOR SERIAL SPECIFIC CONFIGURATIONS/INSTALLATIONS MODIFIED BY SK208-174, SK208-175, SK208-179, SK208-180, CAB09-9, AND CAB08-7, PLEASE REFER TO THE LATEST APPLICABLE REVISION OF THE SPECIFIC CARAVAN BULLETIN (CAB) AND/OR SERVICE KIT (SK) FOR DETAILED INFORMATION.

NOTE 2—USED WITH CHINESE CERTIFIED AIRCRAFT, WITH OR WITHOUT LOW AIRSPEED AWARENESS OPTION

CESSNA®
MODEL 208
ILLUSTRATED PARTS CATALOG

A81455



DETAIL A
SWITCH PANEL ASSEMBLY
FIGURE 01A (SHEET 2)

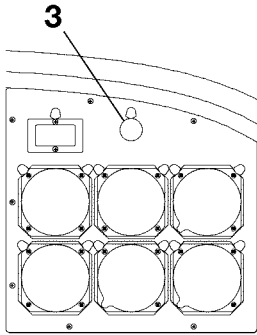
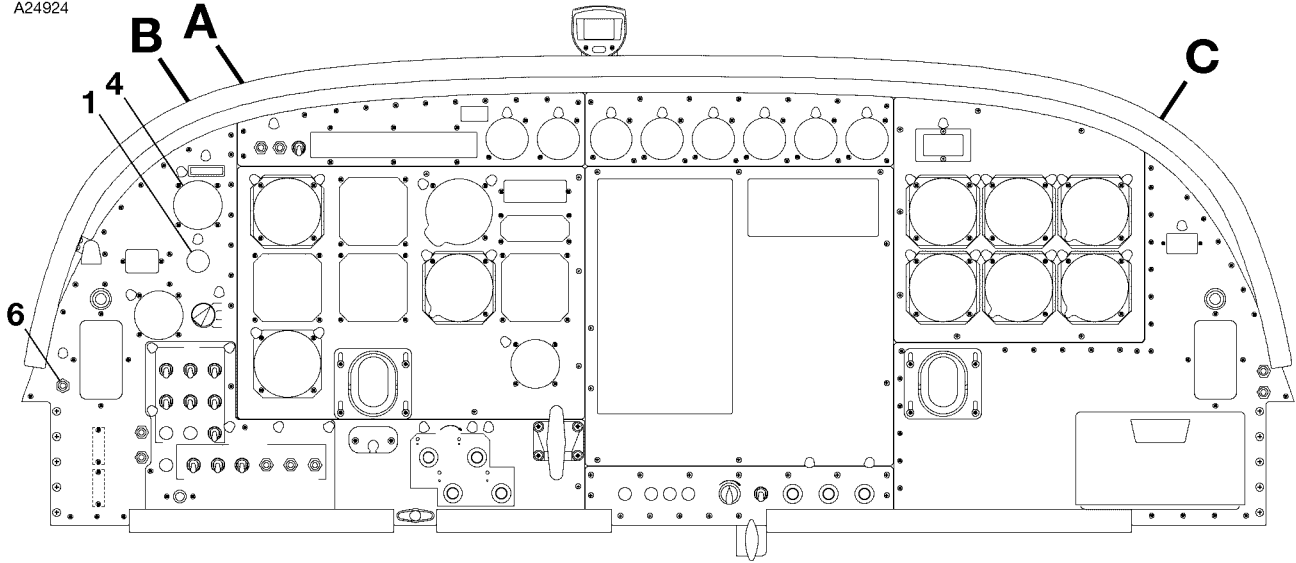
2610T7005
A2618T1450

CESSNA®
MODEL 208
 ILLUSTRATED PARTS CATALOG

FIG ITEM	PART NUMBER	NOMENCLATURE	UNITS PER ASSY
		1 2 3 4 5 6 7	
01A			
75		. LED PANEL-LH REFER TO 33-10-00 FIGURE 01A	RF
76	MS27407-6	. SWITCH-TEST FIRE DETECT-UP FUEL SELECT OFF-DN SI031	01
77	0511063-0	. SWITCH-OVERSPEED GOVERNOR PUSH TO TEST SI006	01
78		. PANEL-LH REFER TO 53-22-01 FIGURE 06	RF
79		. JACK REFER TO 23-50-03 FIGURE 01	RF

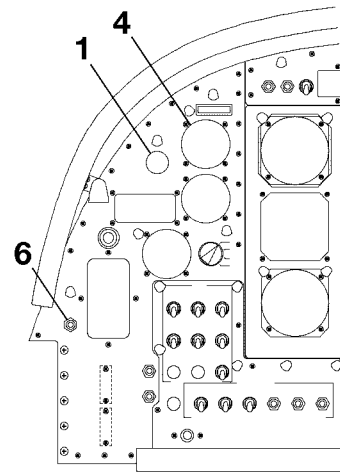
CESSNA®
MODEL 208
 ILLUSTRATED PARTS CATALOG

A24924



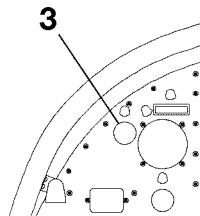
DETAIL C

FRENCH CERTIFIED AIRPLANES



DETAIL A

CARGOMASTER



DETAIL B

FRENCH CERTIFIED AIRPLANES

2618T1014
 A2618T1015
 B2618T1016
 C2618T1016

INSTRUMENT PANEL EQUIPMENT - APPLICABLE TO CARGOMASTER NOT APPLICABLE TO CAT II AIRPLANES

FIGURE 02 (SHEET 1)

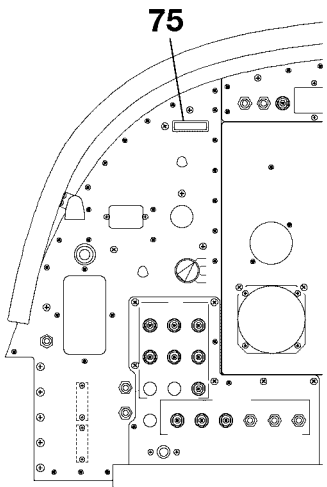
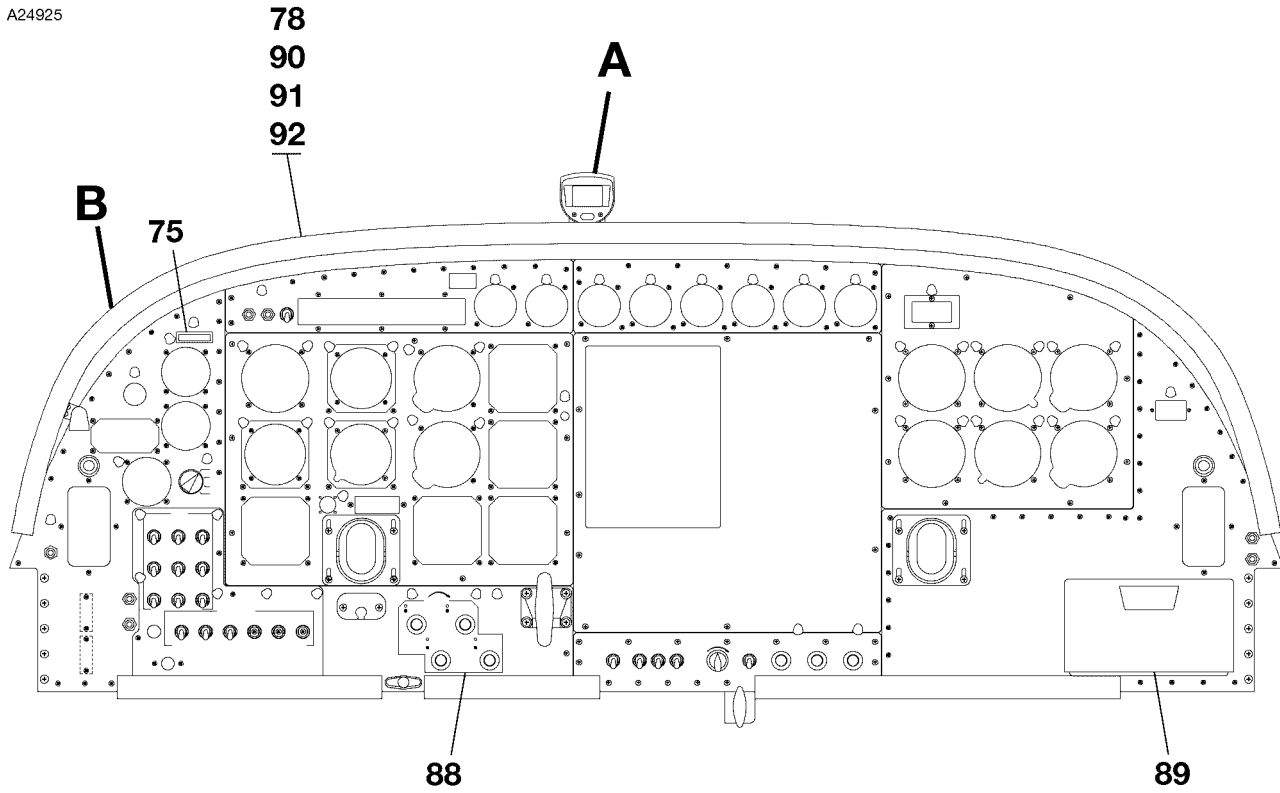
CESSNA®
MODEL 208
 ILLUSTRATED PARTS CATALOG

FIG ITEM	PART NUMBER	NOMENCLATURE	UNITS PER ASSY		
			1	2	3
02		INSTRUMENT PANEL EQUIPMENT - APPLICABLE TO CARGOMASTER NOT	B0001	& ON	RF
-		APPLICABLE TO CAT II AIRPLANES			
1	C662503-0109	. GAGE-PROP DE-ICE AMMETER	B0001	B1999	01
- 2	2513700-23	. COVER WITHOUT PROP ANTI-ICE GAGE	B0001	B1999	01
3	S2852-1	. GAGE-PITOT AMMETER REFER TO NOTE 1	B0039	& ON	02
4	C664508-0201	. ELECTRIC CLOCK	B0001	B0928	01
- 4A	C664511-0102	. QUARTZ CHRONOMETER	B0929	B1999	01
		ATTACHING PARTS			
- 5	MS35214-29	. SCREW	B0001	B0928	04
- 5A	MS35214-25	. SCREW	B0929	B1999	04
		—*—			
6	0511063	. SWITCH-PROP OVERSPEED			01
- 7	0511063-2	. . NUT			01
- 8	10C1015	. GUARD-PROP OVERSPEED SWITCH			01

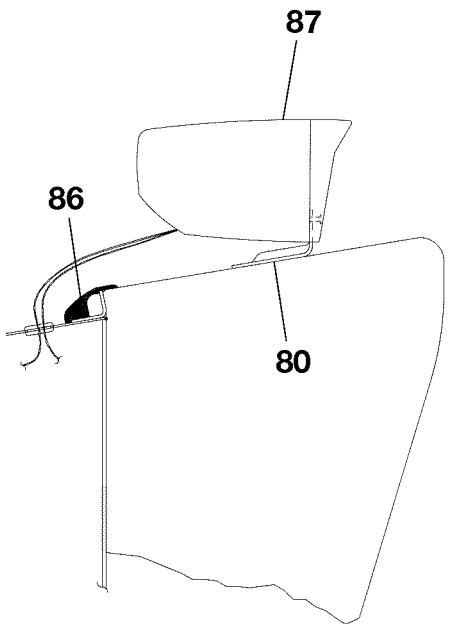
NOTE 1—USED ON FRENCH CERTIFIED AIRPLANES

CESSNA®
MODEL 208
 ILLUSTRATED PARTS CATALOG

A24925



DETAIL B
 CARGOMASTER



DETAIL A

2618T1014
 A2618T1456
 B2618T1015

INSTRUMENT PANEL EQUIPMENT - APPLICABLE TO CARGOMASTER NOT APPLICABLE TO CAT II AIRPLANES
 FIGURE 02 (SHEET 2)

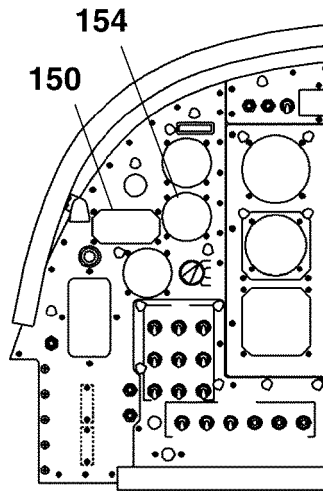
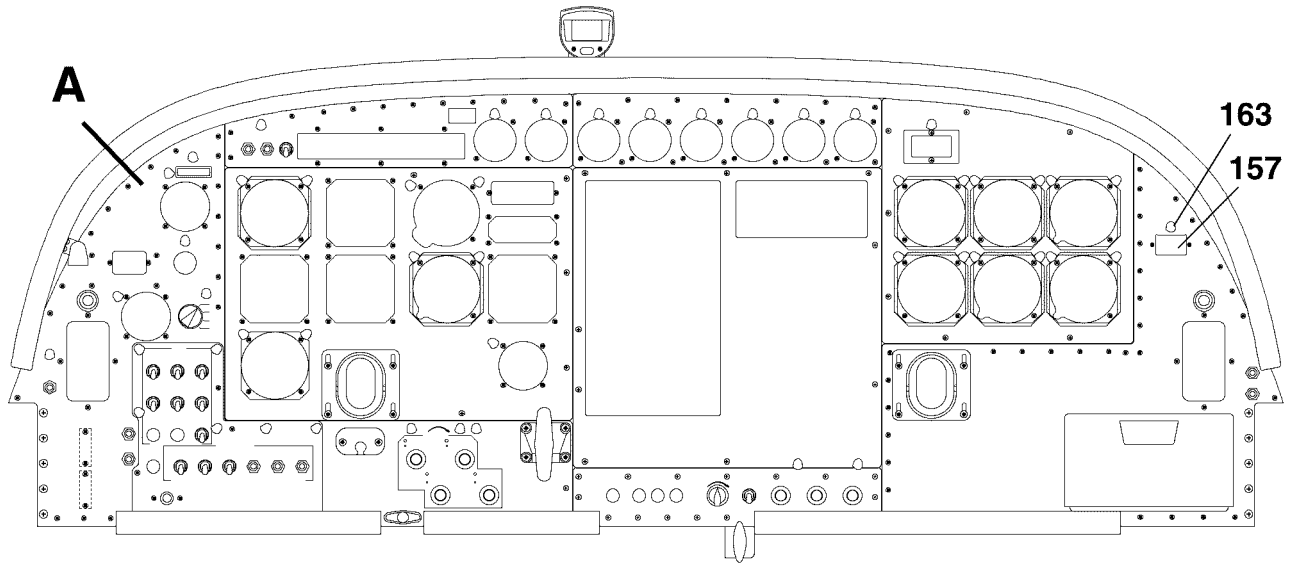
CESSNA®
MODEL 208
ILLUSTRATED PARTS CATALOG

FIG ITEM	PART NUMBER	NOMENCLATURE	UNITS PER ASSY		
			1	2	3
02					
75	5119404-2	. PLACARD-AIRCRAFT IDENTIFICATION			01
- 76		. DELETED-NOT USED			
- 77		. DELETED-NOT USED			
78	2613358-1	. GLARESHIELD ASSY FSO 2615200-201	B0001	B0386	NP
- 78A	2615161-202	. GLARESHIELD ASSY SPARES FSO 2615200-201	B0001	B0386	NP
- 78B	2615200-201	. GLARESHIELD ASSY	B0001	B0386	01
- 78C	2615161-1	. GLARESHIELD ASSY FSO 2615200-1	B0387	B5157	NP
- 78D	2615200-1	. GLARESHIELD ASSY	B5158	& ON	01
		. ATTACHING PARTS			
- 79	NAS221-6	. SCREW	B0001	B0386	13
- 79A	CM3558-8-8G	. SCREW	B0387	& ON	08
- 79B	MS35214-24	. SCREW	B0387	& ON	03
		. *			
80	0513264-1	. BRACKET-COMPASS MOUNTING			01
		. ATTACHING PARTS			
- 81	MS35214-27	. SCREW			03
- 82	MS21048L06	. NUTPLATE	B0001	B0386	03
		. *			
- 83	MS35206-243	. SCREW	B0001	B0386	08
- 84	MS21047L08	. NUTPLATE	B0001	B0386	08
- 85	MS21047L06K	. NUTPLATE	B0001	B0386	02
86	2613360-2	. COVER-GLARESHIELD ATTACH ANGLE	B0001	B0386	01
87		. COMPASS REFER TO 34-21-00 FIGURE 01			RF
88		. LOWER INSTRUMENT PANEL EQUIPMENT REFER TO 24-50-00 FIGURE 01			RF
89		. GLOVE BOX INSTALLATION REFER TO 25-10-04 FIGURE 01			RF
90	5518160-80	. BEAD ASSY-GLARESHIELD FSO 2615162-1	B2000	B5061	NP R
- 90A	2615162-1	. BEAD ASSY-GLARESHIELD	B5062	B5157	01 R
91	5518160-81	. CORD	B2000	B5061	01 R
- 91A	2615162-2	. CORD	B5062	B5157	01 R
92	5518160-82	. COVER	B2000	B5061	01 R
- 92A	2615162-3	. COVER	B5062	B5157	01 R

- ITEM NOT ILLUSTRATED

CESSNA®
MODEL 208
II ILLUSTRATED PARTS CATALOG

A24926



CARGOMASTER

DETAIL A

APPLICABLE TO CARGOMASTER
NOT APPLICABLE TO CAT II AIRPLANES

2618T1014
A2618T1015

INSTRUMENT PANEL EQUIPMENT - APPLICABLE TO CARGOMASTER NOT APPLICABLE TO CAT II
AIRPLANES
FIGURE 02 (SHEET 3)

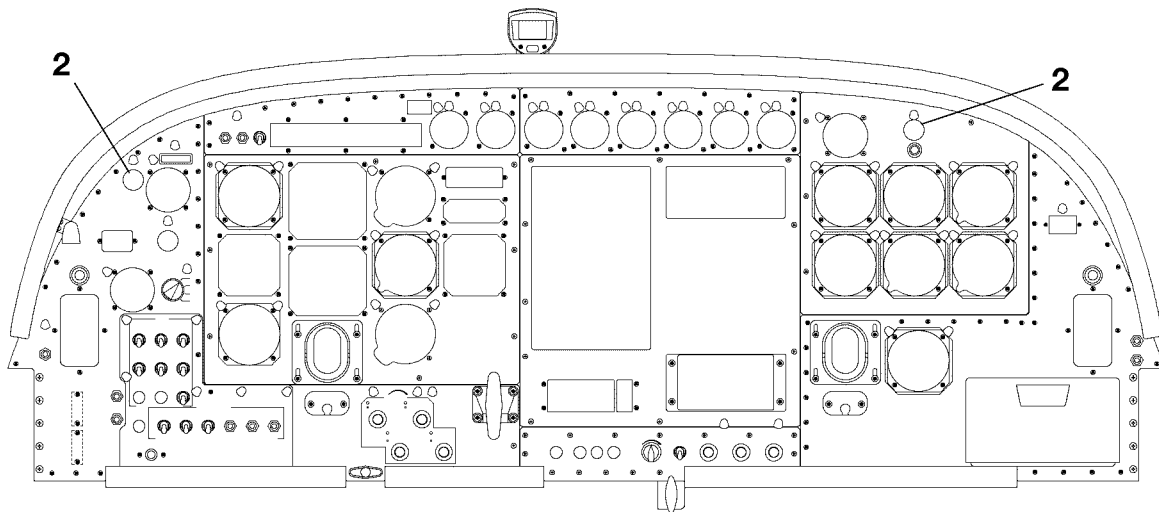
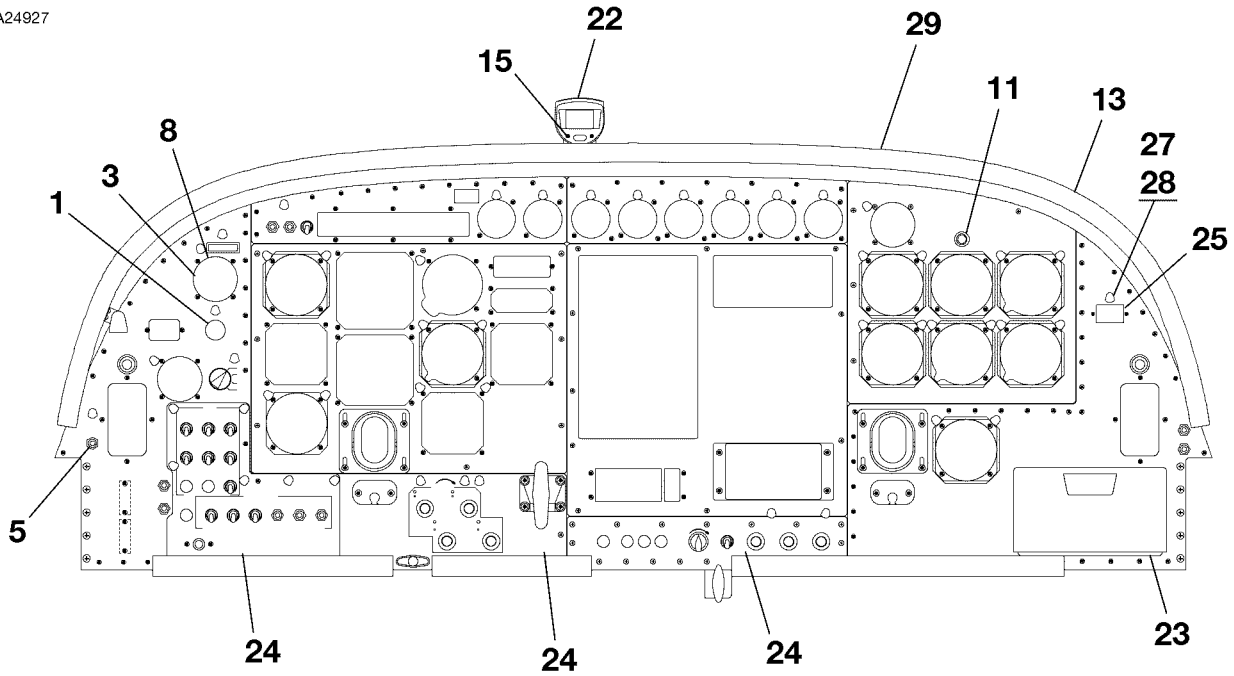
CESSNA®
MODEL 208
 ILLUSTRATED PARTS CATALOG

FIG ITEM	PART NUMBER	NOMENCLATURE	UNITS	
			PER	ASSY
02				
150	2513700-25	. COVER-ALTITUDE ALERT	B0180	B0340 01
- 151	2613459-1	. COVER PLATE ASSY ATTACHING PARTS	B0341	B1999 01
- 152	MS35214-14	. SCREW		04
- 153	MS21044N04	. NUT *—		04
154	2513700-2	. COVER-PRESSURE ATTACHING PARTS		01
- 155	MS35214-25	. SCREW		04
- 156	MS21044N6	. NUT *—		04
157	C664503-0101	. HOURMETER	B0087	& ON 01
- 157A	C664503-0104	. HOURMETER ALT FOR C664503-0101 ATTACHING PARTS	B0087	& ON 01
- 158	MS35214-27	. SCREW	B0087	& ON 02
- 159	MS35333-105	. WASHER	B0087	& ON 02
- 160	AN340B6	. NUT FSO MS35649-265B	B0087	& ON NP
- 160A	MS35649-265B	. NUT *—	B0087	& ON 02
- 161	2513700-29	. COVER W/O HOURMETER ATTACHING PARTS	B0087	& ON 01
- 162	S1021A6-6B	. SCREW *—	B0087	& ON 02
163	MS35214-40	. SCREW USED W/O POSTLIGHT	B0087	& ON 01
- 164	MS20364-832C	. NUT USED W/O POSTLIGHT	B0087	& ON 01

- ITEM NOT ILLUSTRATED

CESSNA®
MODEL 208
ILLUSTRATED PARTS CATALOG

A24927



FRENCH CERTIFIED AIRPLANES

AIRPLANES 208B0044 THRU 208B0179
INSTRUMENT PANEL EQUIPMENT - CAT II AIRPLANES
FIGURE 03 (SHEET 1)

2618T1012
2618T1013

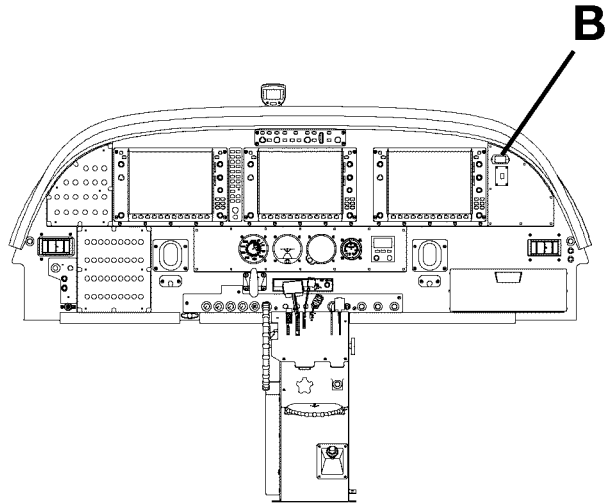
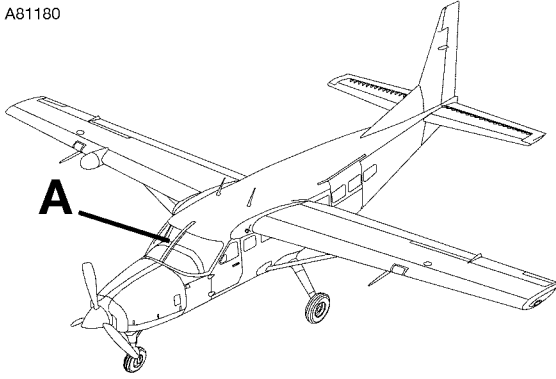
CESSNA®
MODEL 208
ILLUSTRATED PARTS CATALOG

FIG ITEM	PART NUMBER	NOMENCLATURE	UNITS	
			PER	ASSY
03		INSTRUMENT PANEL EQUIPMENT - CAT II AIRPLANES	B0044	B0179 RF
-				
1	C662503-0109	. GAGE-PROP DEICE AMMETER		01
2	S2852-1	. GAGE-PITOT AMMETER REFER TO NOTE 1		02
3	C664508-0201	. ELECTRIC CLOCK		01
		ATTACHING PARTS		
- 4	MS35214-29	. SCREW		04
		—*—		
5	0511063	. SWITCH-PROP OVERSPEED		01
- 6	0511063-2	. NUT		01
- 7	10C1015	. GUARD-PROP OVERSPEED SWITCH		01
8	5119404-2	. PLACARD-AIRCRAFT IDENTIFICATION		01
- 9		. DELETED-NOT USED		
- 10		. DELETED-NOT USED		
11	CM6839	. LAMP-LOW VACCUUM WARNING		01
- 12	700043B-RTL-STB	. LAMP HOLDER-LOW VACUUM WARNING LIGHT	V08717	01
13	2613358-1	. GLARESHIELD ASSY FSO 2615200-201		NP
- 13A	2615161-202	. GLARESHIELD ASSY SPARES FSO 2615200-201		NP
- 13B	2615200-201	. GLARESHIELD ASSY SPARES		01
		ATTACHING PARTS		
- 14	NAS221-6	. SCREW-USED WITH 2613358-1		13
- 14A	CM3558-8-8G	. SCREW-USED WITH 2615161-1		08
- 14B	MS35214-24	. SCREW-USED WITH 2615161-1		03
		—*—		
15	0513264-1	. BRACKET-COMPASS MOUNTING USED ON 2613358-1		01
		ATTACHING PARTS		
- 16	MS35214-27	. SCREW		03
- 17	MS21048L06	. NUTPLATE-USED ON 2613358-1		03
		—*—		
- 18	MS35206-243	. SCREW-USED ON 2613358-1		08
- 19	MS21047L08	. NUTPLATE-USED ON 2613358-1		08
- 20	MS21047L06K	. NUTPLATE-USED ON 2613358-1		02
- 21	2613360-2	. COVER-GLARESHIELD ATTACH ANGLE USED WITH 2613358-1		01
22		. COMPASS REFER TO 34-21-00 FIGURE 01		RF
23		. GLOVE BOX INSTALLATION REFER TO 25-10-04 FIGURE 01		RF
24		. LOWER INSTRUMENT PANEL EQUIPMENT REFER TO 24-50-00 FIGURE 01		RF
25	2513700-11	. COVER-W/O HOURMETER		01
		ATTACHING PARTS		
- 26	S1021A6-6B	. SCREW		02
		—*—		
27	MS35214-40	. SCREW		01
28	MS20364-832C	. NUT		01
29	5518160-80	. BEAD ASSY-GLARESHIELD		01 R
- 30	5518160-81	. CORD		01 R
- 31	5518160-82	. COVER		01 R

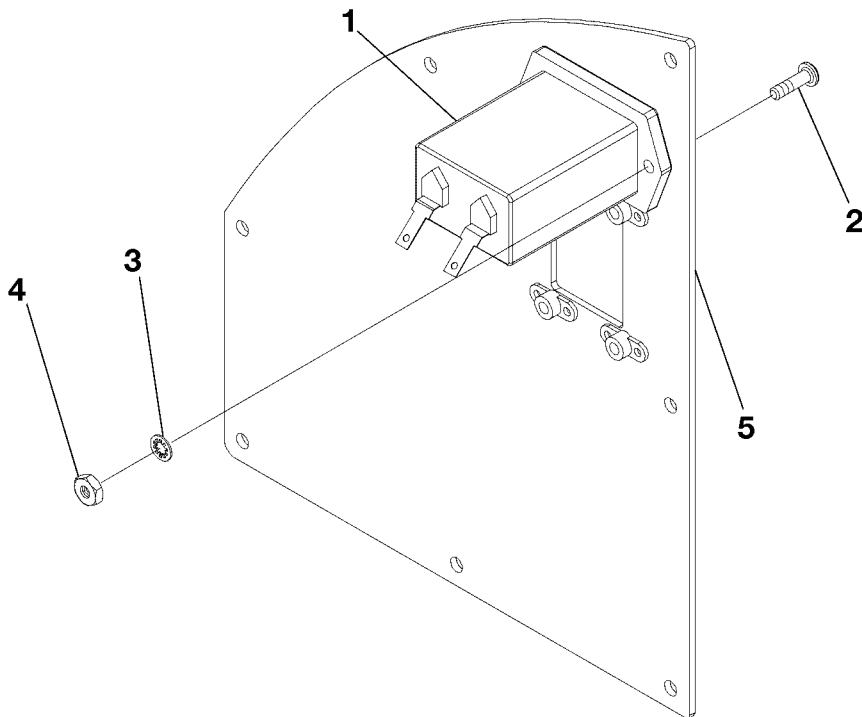
NOTE 1—USED ON FRENCH CERTIFIED AIRPLANES

CESSNA®
MODEL 208
ILLUSTRATED PARTS CATALOG

A81180



DETAIL A



DETAIL B

FLIGHT HOUR RECORDER INSTALLATION
FIGURE 04 (SHEET 1)

2610T7005
A2618T1421
B2618T1447

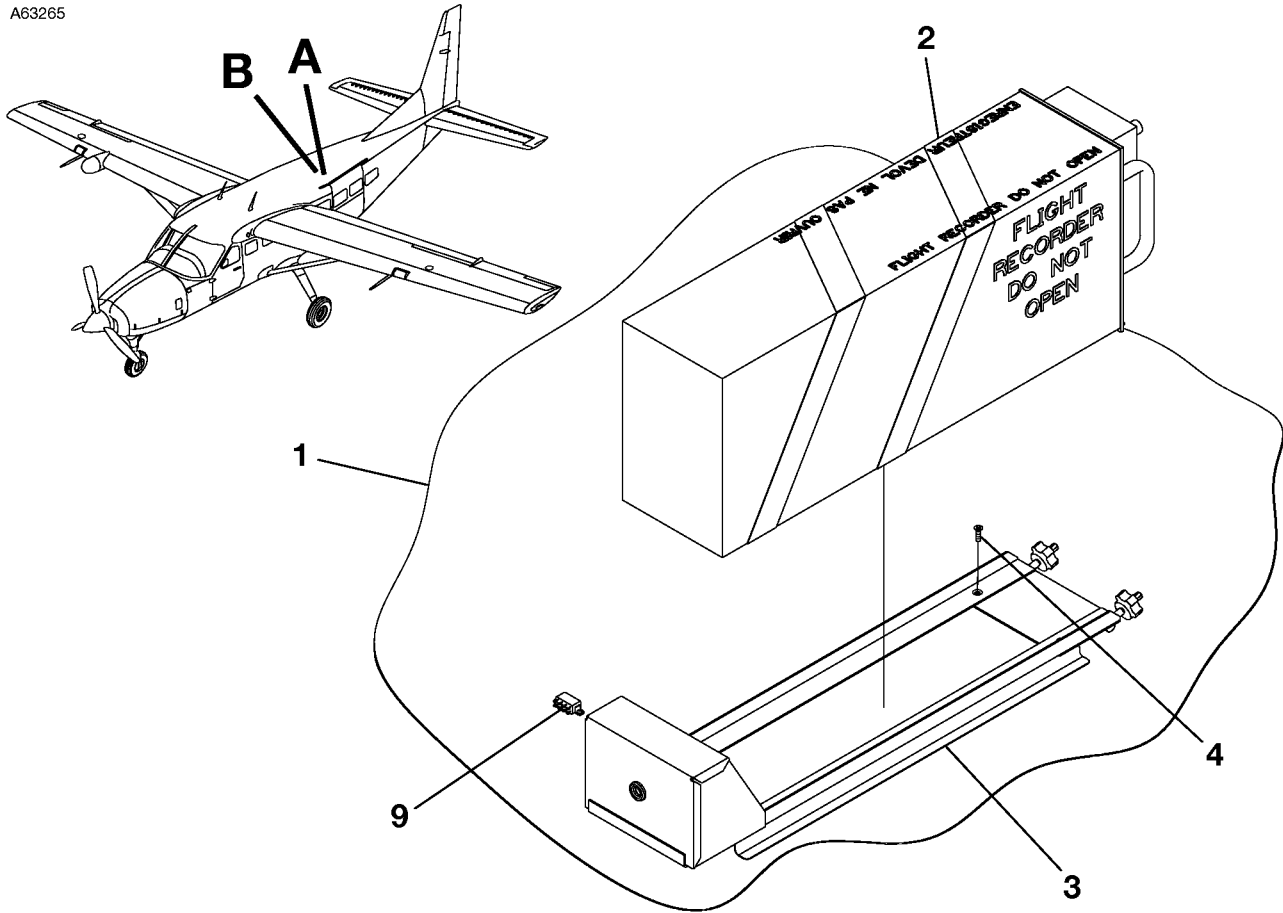
CESSNA®
MODEL 208
 ILLUSTRATED PARTS CATALOG

FIG ITEM	PART NUMBER	NOMENCLATURE	UNITS PER ASSY	
			1 2 3 4 5 6 7	
04		FLIGHT HOUR RECORDER INSTALLATION	0500	& ON RF R
-			B2000	& ON
1	C664503-0104	. HOURMETER EI001		01 R
- 1A	C664503-0101	. HOUR METER ALT FOR C664503-0101		01 R
- 1B	C664503-0102	. HOUR METER ALT FOR C664503-0101		01 R
		ATTACHING PARTS		
2	MS35214-27	. SCREW		02 R
3	MS35333-105	. WASHER		02 R
4	MS35649-265B	. NUT		02 R
		_*		
5		. PANEL REFER TO 53-22-01 FIGURE 06		RF R

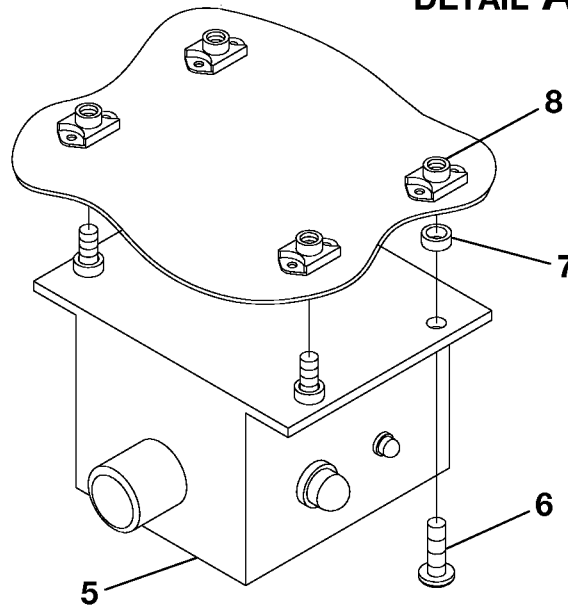
- ITEM NOT ILLUSTRATED

CESSNA®
MODEL 208
ILLUSTRATED PARTS CATALOG

A63265



DETAIL A



DETAIL B

FLIGHT DATA RECORDER
FIGURE 01 (SHEET 1)

2610T7005
A2618T1396
B2618T1397

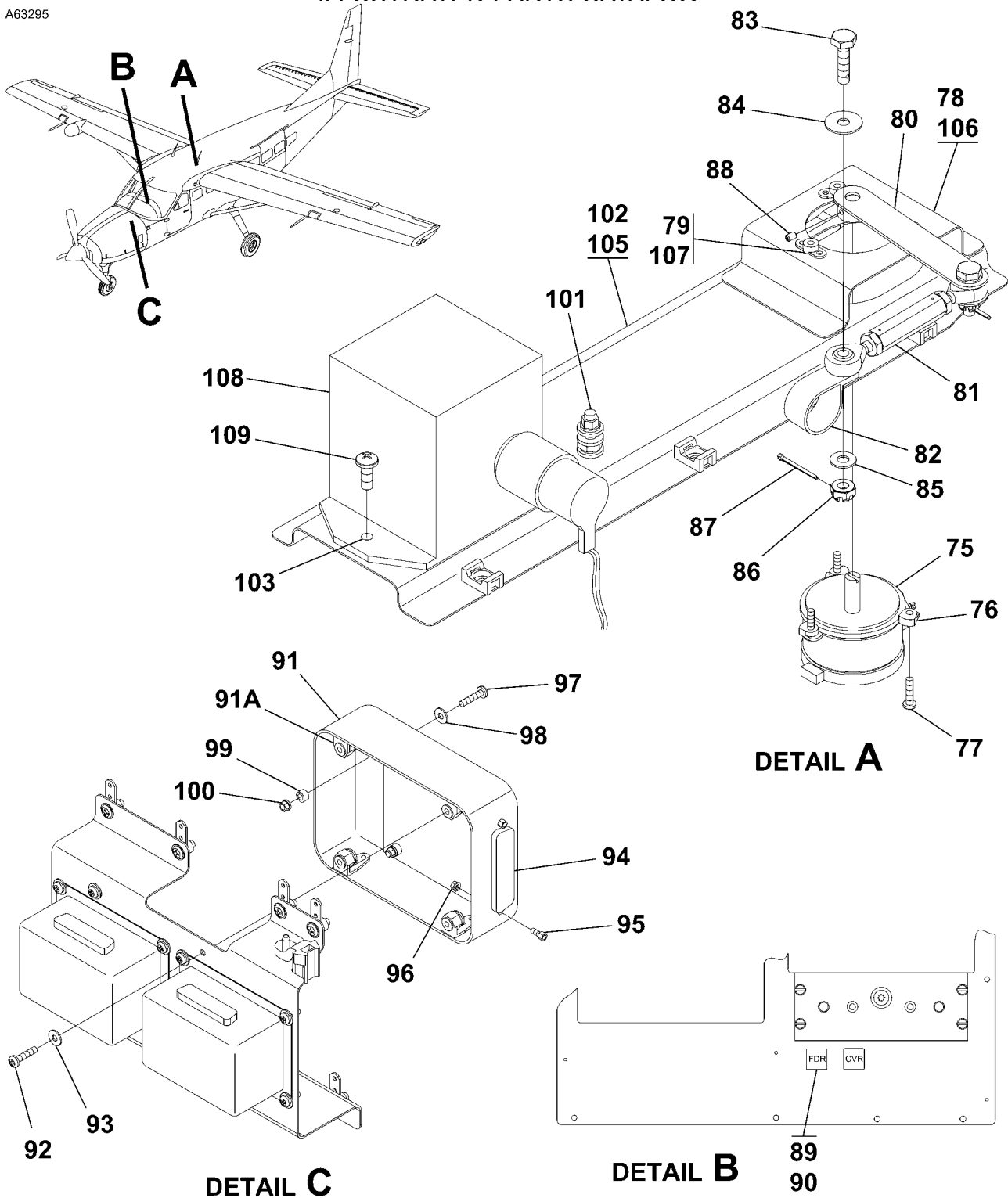
CESSNA®
MODEL 208
 ILLUSTRATED PARTS CATALOG

FIG ITEM	PART NUMBER	NOMENCLATURE							UNITS PER ASSY
		1	2	3	4	5	6	7	
01		FLIGHT DATA RECORDER							
-								B1215 & ON	RF
1									RF
2	S703-1000-00								01
3	94247-2								01
4	MS24694-S5								04
5	6895-D-2-X-5-5								01
6	MS35207-264								04
7	NAS43DD3-8FC								04
8	MS21075L3N								04
9									RF

- ITEM NOT ILLUSTRATED

CESSNA®
MODEL 208
 ILLUSTRATED PARTS CATALOG

A63295



2610T7005
 A2618T1398
 B2618T1399
 C2618T1400

FLIGHT DATA RECORDER
 FIGURE 01 (SHEET 2)

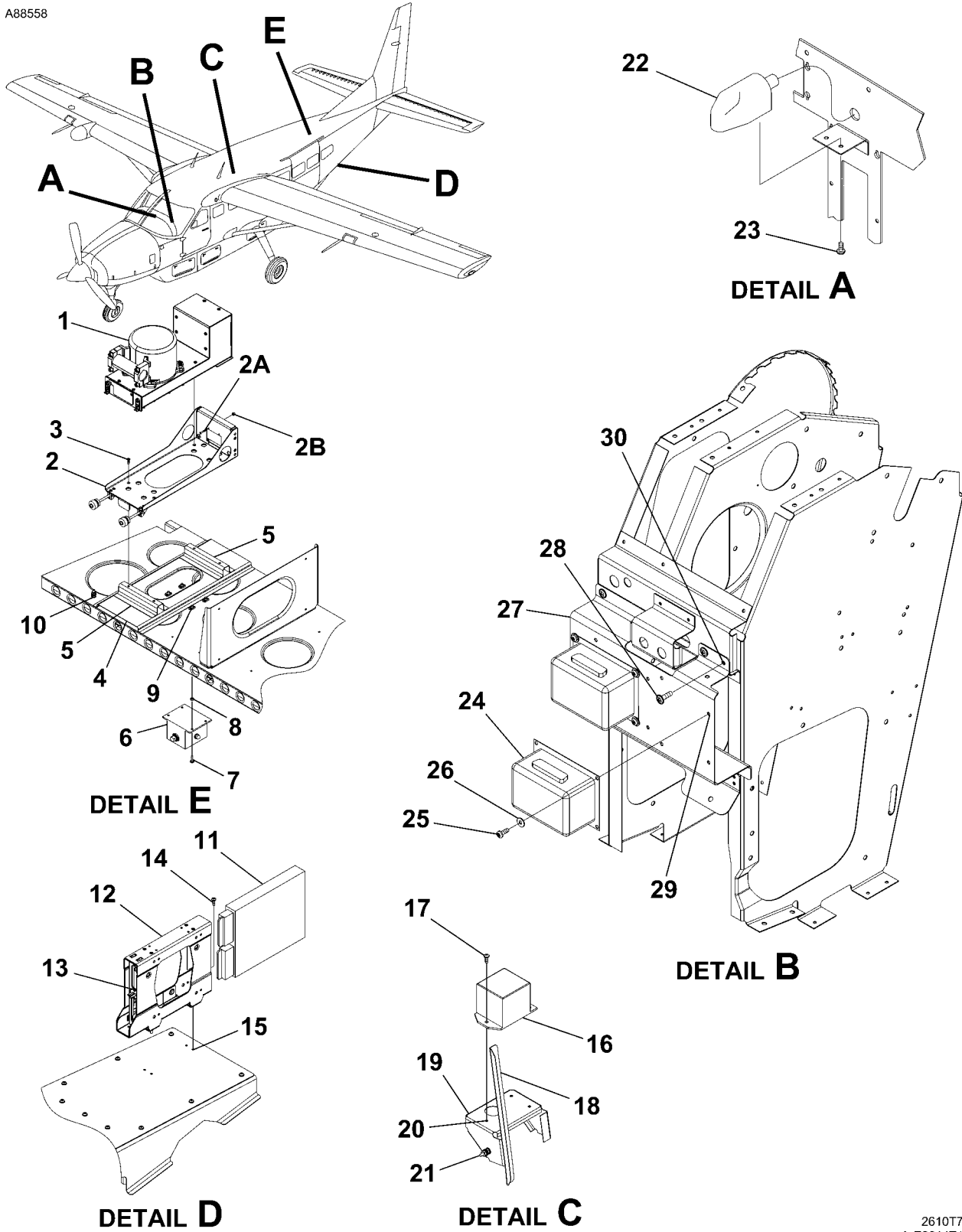
CESSNA®
MODEL 208
ILLUSTRATED PARTS CATALOG

FIG ITEM	PART NUMBER	NOMENCLATURE	1 2 3 4 5 6 7							UNITS PER ASSY
01										
75	V200639	. POTENTIOMETER V16509								01
		. ATTACHING PARTS								
76	L3-7	. MOUNT CLEAT V73134								03 R
77	MS35206-217	. SCREW								03
		. * _								
78	2601495-3	. BRACKET ASSY-POTENTIOMETER								01
79	MS21069L04	. NUTPLATE								03
80	2601495-7	. LEVER ASSY								01
81	2601495-10	. ROD ASSY								01
82	MS21322-11	. CLAMP								01
83	AN3-6	. BOLT								02
84	NAS1149F0332P	. WASHER								02
85	S1450-3-10-032	. WASHER								02
86	AN310-3	. NUT								02
87	MS24665-172	. COTTER PIN								02
88	AN565D4H3	. SET SCREW								02
89	LEDXX17HK30498	. ANNUNCIATOR V32245								01
90	LED-40-17	. SWITCH BODY V32245								01
- 90A	95-40-17	. SWITCH BODY-ALT FOR LED-40-17 V32245								01
91	2601495-17	. BOX ASSY-BUFFER/AMP								01
91A	AN256F6	. NUTPLATE								04
		. ATTACHING PARTS								
92	MS35206-231	. SCREW								04
93	NAS1149FN832P	. WASHER								04
		. * _								
94	3929029-3	. PCB ASSY-BUFFER/APB								01
		. ATTACHING PARTS								
95	5205817-1	. SCREWLOCK KIT V00779								01
96	MS21042-04	. NUT								02
97	MS35206-231	. SCREW								02
98	NAS1149FN632P	. WASHER								02
99	NAS43DD1-8FC	. SPACER								02
100	MS21042-06	. NUT								02
		. * _								
101		. GROUND STUD ASSY-REFER TO 23-70-00 FIGURE 01								RF
102	2601495-5	. BRACKET ASSY ACCELERATOR								01
103	MS21075L3N	. NUTPLATE								03
- 104	3940491-1	. CVDR BRACKET ASSY						0570	& ON	01 R
								B5185	& ON	
105	261495-23	. BRACKET-ACCELEROMETER						0570	& ON	01 R
								B5185	& ON	
106	2601495-3	. BRACKET ASSY-POTENTIOMETER						0570	& ON	01 R
								B5185	& ON	
107	MS21069L04	. NUTPLATE								03 R
108	3001-01-100-3	. VERTICAL ACCELEROMETER V99564								01 R
		. ATTACHING PARTS								
109	MS35207-263	. SCREW								03 R
		. * _								

- ITEM NOT ILLUSTRATED

CESSNA®
MODEL 208
 ILLUSTRATED PARTS CATALOG

A88558



COCKPIT VOICE DATA RECORDER INSTALLATION
 FIGURE 02 (SHEET 1)

2610T7004
 A-E2614T1466

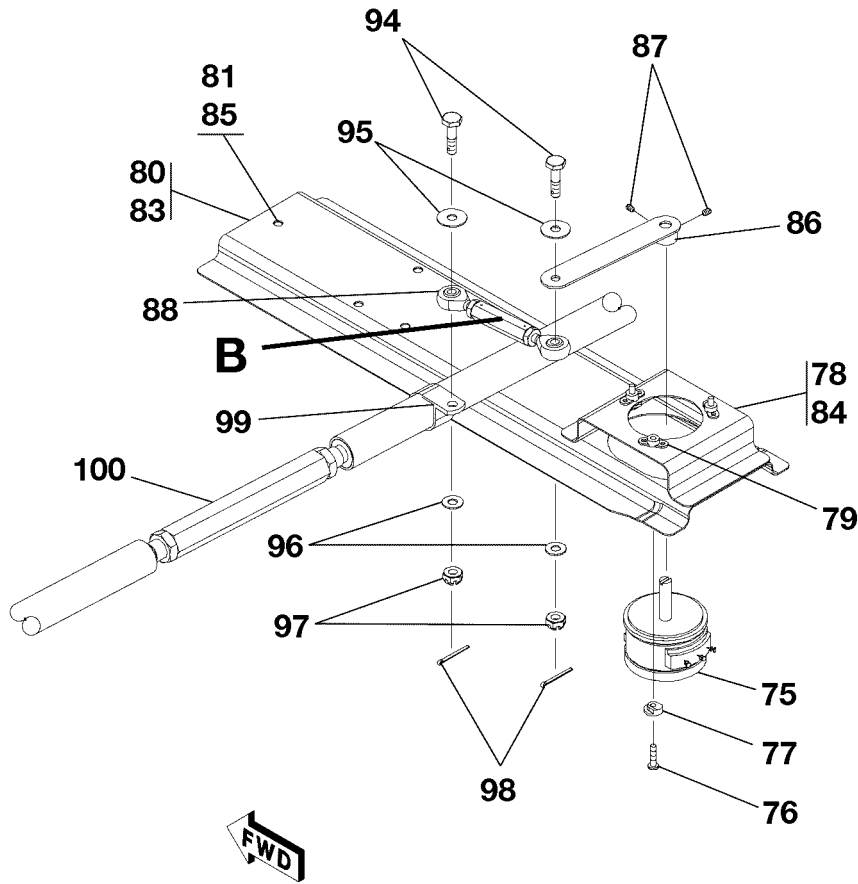
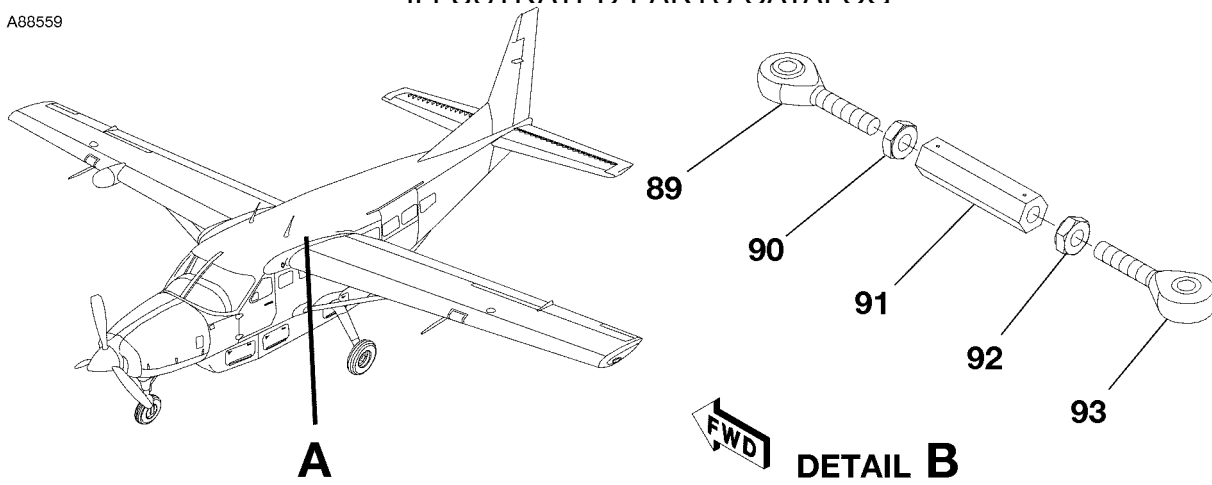
CESSNA®
MODEL 208
ILLUSTRATED PARTS CATALOG

FIG ITEM	PART NUMBER	NOMENCLATURE	UNITS PER ASSY		
			1	2	3
02		COCKPIT VOICE DATA RECORDER INSTALLATION	0524	& ON	RF
-			B2226	& ON	
1	2100-3083-51	. COCKPIT VOICE AND DATA RECORDER V06141			01
2	178E0919-00	. SSCVR MOUNT V06141			01
2A	MS24693-S6	. SCREW			04
2B	MS21044N04	. NUT			04
		ATTACHING PARTS			
3	MS24694-S5	. SCREW			04
- 3A	AN509-8R8	. SCREW-ALT FOR MS24694-S5			04
		—*—			
4	3940005-4	. BRACKET ASSY-COCKPIT VOICE DATA RECORDER	0524	0584	01 R
			B2226	B5293	
- 4A	2601020-6	. BRACKET ASSY-COCKPIT VOICE DATA RECORDER	0585	& ON	01 R
			B5294	& ON	
		ATTACHING PARTS			
- 4B	MS27039-0808	. SCREW	0585	& ON	09
			B5294	& ON	
		—*—			
5	3940005-6	. HAT ASSY			02
6	6895-D-2-X-5-5	. IMPACT SWITCH V14923			01
		ATTACHING PARTS			
7	MS35207-264	. SCREW			04
8	NAS43DD3-8FC	. SPACER			04
		—*—			
9	MS21075L3N	. NUTPLATE			04
10	6318104-2	. GROUND STUD			01
11	S3100-521	. DATA CONCENTRATOR UNIT-GSD 41 VENDOR NO. 011-01457-00 (MOD0)	0524	0650	01 R
			B2226	B5500	
12	115-00658-00	. REMOTE MOUNT RACK V0TRC3	0524	0650	01 R
			B2226	B5500	
13	011-00796-01	. BACKPLATE V0TRC3	0524	0650	01 R
			B2226	B5500	
		ATTACHING PARTS			
14	MS35206-245	. SCREW	0524	0650	04 R
			B2226	B5500	
		—*—			
15	MS21075L08N	. NUTPLATE	0524	0650	04 R
			B2226	B5500	
16	3001-01-111	. ACCELEROMETER-3-AXIS V65998			01
		ATTACHING PARTS			
17	MS35207-263	. SCREW			03
		—*—			
18	3940005-13	. ANGLE			01
19	3940005-11	. BRACKET ASSY-ACCELEROMETER			01
20	MS21069L3	. NUTPLATE			03
21	6318104-2	. GROUND STUD-ALT 9256010-1			01
22	S056-0048-00	. MICROPHONE-CVR V06141			01
		ATTACHING PARTS			
23	MS35206-227	. SCREW			02
		—*—			
24	M1090	. CVR ADAPTER V56081	0524	0650	02 R
			B2226	B5500	
		ATTACHING PARTS			
25	MS35206-228	. SCREW	0524	0650	08 R
			B2226	B5500	
26	NAS1149FN632P	. WASHER	0524	0650	08 R
			B2226	B5500	
		—*—			
27	2601495-15	. BRACKET ASSY-ADAPTERS	0524	0650	01 R
			B2226	B5500	
		ATTACHING PARTS			
28	AN525-832R9	. SCREW	0524	0650	06 R
			B2226	B5500	
		—*—			
29	MS21075L06N	. NUTPLATE	0524	0650	08 R
			B2226	B5500	
30	MS21051L08K	. NUTPLATE	0524	0650	06 R
			B2226	B5500	

- ITEM NOT ILLUSTRATED

CESSNA®
MODEL 208
 ILLUSTRATED PARTS CATALOG

A88559



DETAIL A

COCKPIT VOICE DATA RECORDER INSTALLATION
 FIGURE 02 (SHEET 2)

2610T7004
 A2614T1466
 B2614T1466

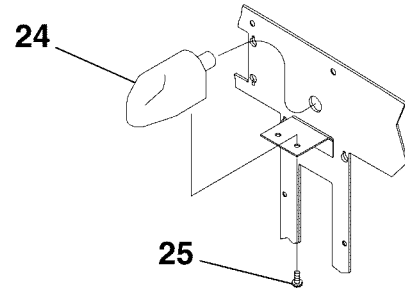
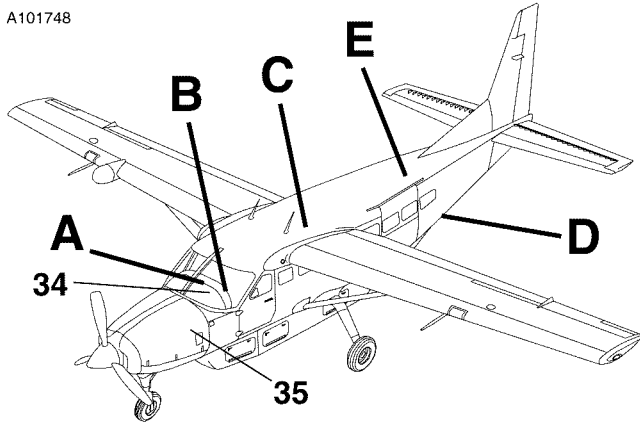
CESSNA®
MODEL 208
 ILLUSTRATED PARTS CATALOG

FIG ITEM	PART NUMBER	NOMENCLATURE	1 2 3 4 5 6 7							UNITS PER ASSY
02										
75	V200639	. POTENTIOMETER V16509								01
		. ATTACHING PARTS								
76	MS35206-217	. SCREW								03
77	L3-7	. MOUNT CLEAT V73134								03 R
		. * .								
78	2601495-3	. BRACKET ASSY-POTENTIOMETER								01
79	MS21069L04	. NUTPLATE								03
80	2601495-5	. BRACKET ASSY-ACCELEROMETER					0524	0569		01
							B2226	B5184		
- 80A	2601495-23	. BRACKET ASSY-ACCELEROMETER					0570	& ON		01
							B5185	& ON		
81	MS21075L3N	. NUTPLATE					0524	0569		03
							B2226	B5184		
- 82	3940491-1	. CVDR BRACKET ASSY					0570	& ON		01
							B5185	& ON		
83	261495-23	. BRACKET-ACCELEROMETER					0570	& ON		01
							B5185	& ON		
84	2601495-3	. BRACKET ASSY-POTENTIOMETER					0570	& ON		01
							B5185	& ON		
85	MS21069L04	. . . NUTPLATE								03
86	2601495-7	. LEVER ASSY								01
		. ATTACHING PARTS								
87	AN565D4H3	. SET SCREW								02
		. * .								
88	2601495-10	. ROD ASSY								01
89	S1105-3	. BEARING								01
90	AN315-3R	. NUT								01
91	2613419-1	. BARREL-FLAP								01
92	AN315-3L	. NUT								01
93	S1105-3L	. BEARING								01
		. ATTACHING PARTS								
94	AN3-6	. BOLT								02
95	NAS1149F0332P	. WASHER								02
96	S1450-3-10-032	. WASHER								02
97	AN310-3	. NUT								02
98	MS24665-172	. COTTER PIN								02
		. * .								
99	MS21322-11	. CLAMP								01
100		. ROD ASSY-INNTERCONNECT FLAP-REFER TO 27-50-01 FIGURE 01								RF

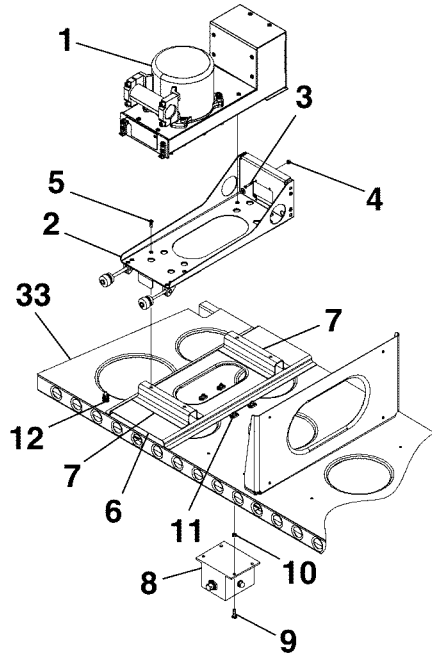
- ITEM NOT ILLUSTRATED

CESSNA®
MODEL 208
 ILLUSTRATED PARTS CATALOG

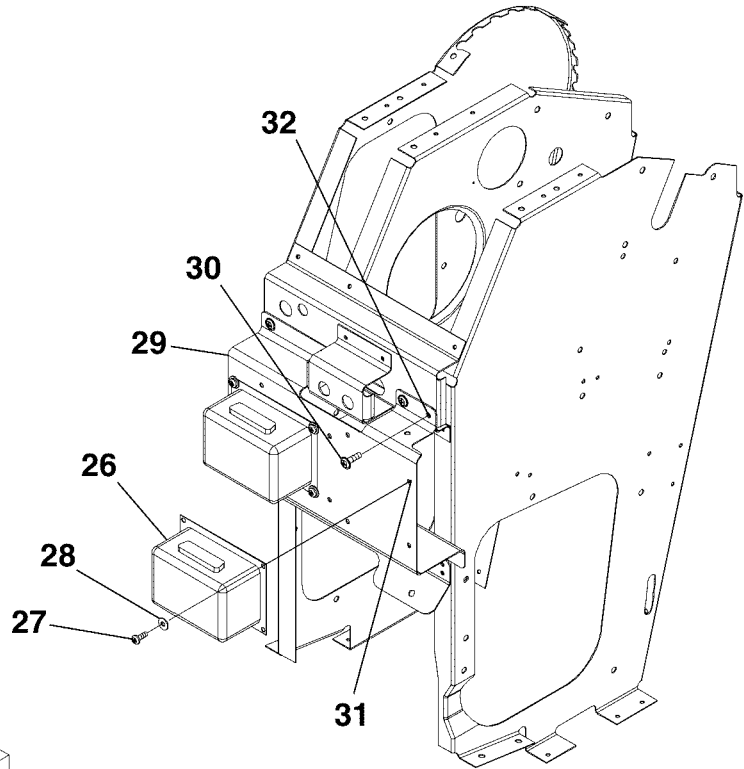
A101748



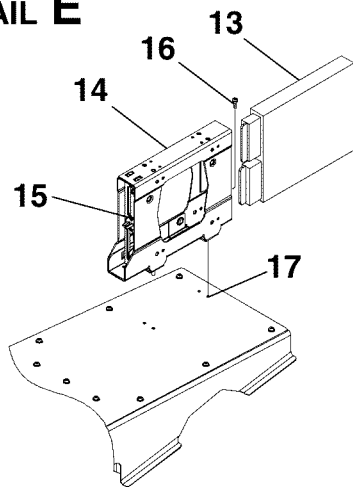
DETAIL A



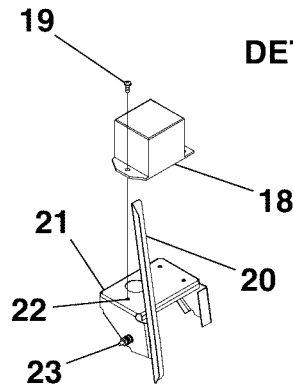
DETAIL E



DETAIL B



DETAIL D



DETAIL C

COCKPIT VOICE DATA RECORDER INSTALLATION
 FIGURE 02A (SHEET 1)

2610T7004
 A-E2614T1466

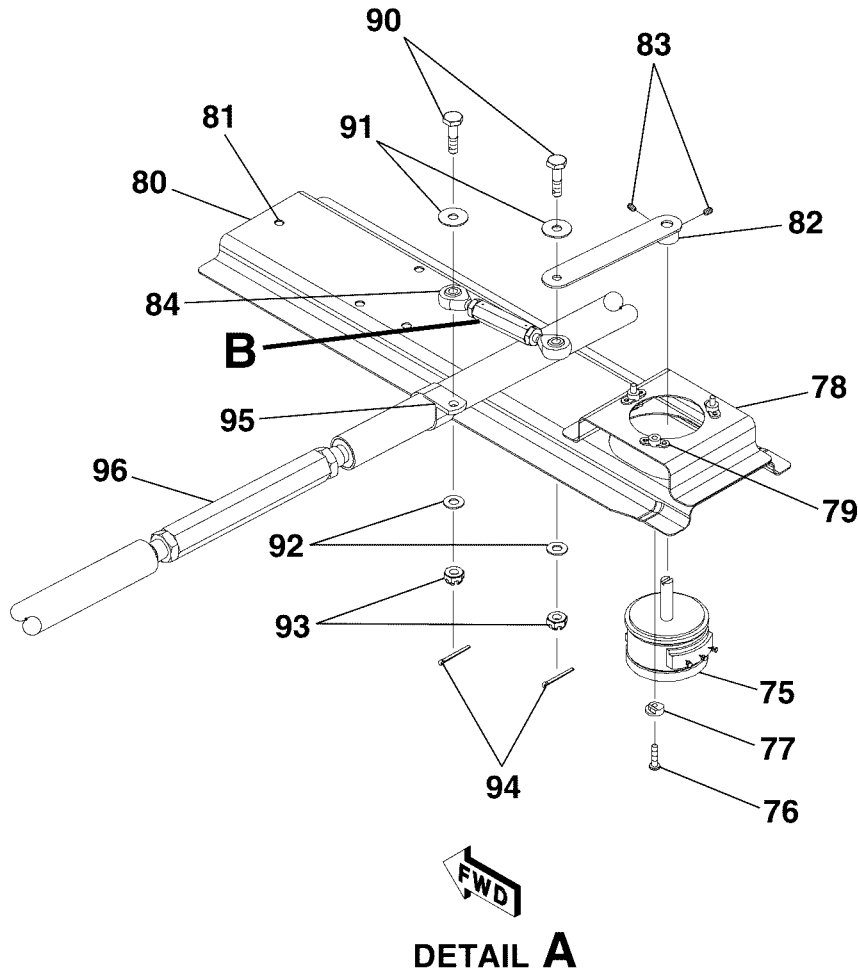
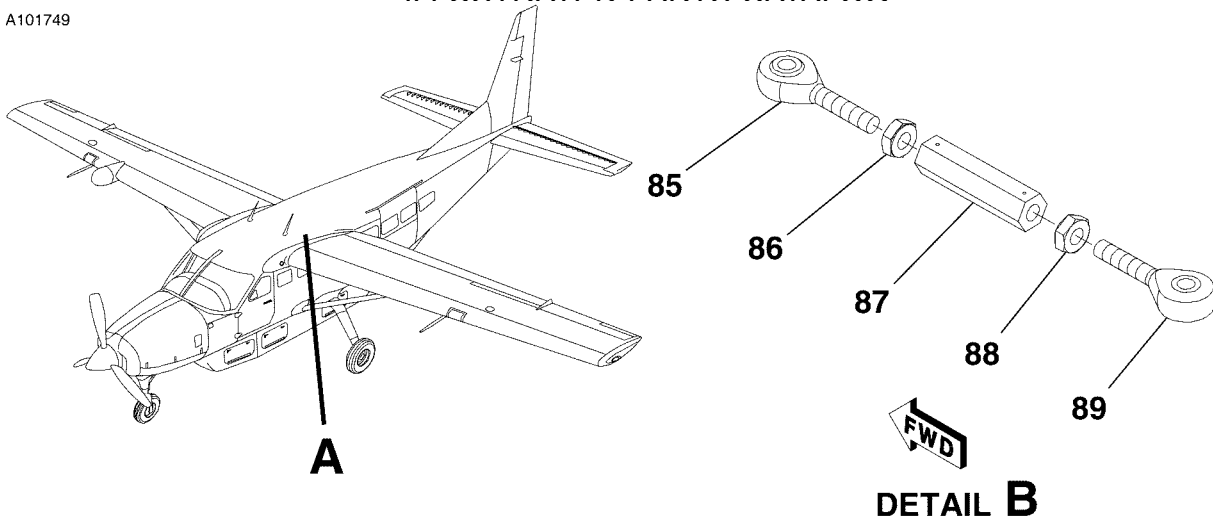
CESSNA®
MODEL 208
ILLUSTRATED PARTS CATALOG

FIG ITEM	PART NUMBER	NOMENCLATURE	UNITS PER ASSY			
			1	2	3	4
02A		COCKPIT VOICE DATA RECORDER INSTALLATION REFER TO NOTE 1			B5000 & ON	RF
-						
1	2100-3083-51	. COCKPIT VOICE AND DATA RECORDER V06141				01
2	178E0919-00	. SSCVR MOUNT V06141				01
3	MS24693-S6	. SCREW				04
4	MS21044N04	. NUT				04
		ATTACHING PARTS				
5	MS24694-S5	. SCREW				04
- 5A	AN509-8R8	. SCREW-ALT FOR MS24694-S5				04
		—*—				
6	3940005-4	. BRACKET ASSY-COCKPIT VOICE DATA RECORDER				01
7	3940005-6	. HAT ASSY				02
8	6895-D-2-X-5-5	. IMPACT SWITCH V14923				01
		ATTACHING PARTS				
9	MS35207-264	. SCREW				04
10	NAS43DD3-8FC	. SPACER				04
		—*—				
11	MS21075L3N	. NUTPLATE				04
12	6318104-2	. GROUND STUD				01
13	S3100-521	. DATA CONCENTRATOR UNIT-GSD 41 ALT FOR 011-01457-00 (MOD0)			B5000 B5500	01 R
14	115-00658-00	. REMOTE MOUNT RACK V0TRC3				01
15	011-00796-01	. BACKPLATE V0TRC3				01
		ATTACHING PARTS				
16	MS35206-245	. SCREW				01
		—*—				
17	MS21075L08N	. NUTPLATE				04
18	3001-01-111	. ACCELEROMETER-3-AXIS V65998				01
		ATTACHING PARTS				
19	MS35207-263	. SCREW				03
		—*—				
20	3940005-13	. ANGLE				01
21	3940005-11	. BRACKET ASSY-ACCELEROMETER				01
22	MS21069L3	. NUTPLATE				03
23	6318104-2	. GROUND STUD-ALT 9256010-1				01
24	S056-0048-00	. MICROPHONE-CVR V06141				01
		ATTACHING PARTS				
25	MS35206-227	. SCREW				02
		—*—				
26	M1090	. CVR ADAPTER V56081				02
		ATTACHING PARTS				
27	MS35206-228	. SCREW				08
28	NAS1149FN632P	. WASHER				08
		—*—				
29	2601495-15	. BRACKET ASSY-ADAPTERS				01
		ATTACHING PARTS				
30	AN525-832R9	. SCREW				06
		—*—				
31	MS21075L06N	. NUTPLATE				08
32	MS21051L08K	. NUTPLATE				06
33		. SHELF ASSEMBLY REFER TO 53-20-05 FIGURE 01				RF
34		. CIRCUIT BREAKER REFER TO 24-50-01 FIGURE 02				RF
35		. CIRCUIT BREAKER REFER TO 24-52-05 FIGURE 01				RF

NOTE 1—AIRPLANES -B5000 & ON INCORPORATING CAB-31-01.

CESSNA®
MODEL 208
ILLUSTRATED PARTS CATALOG

A101749



COCKPIT VOICE DATA RECORDER INSTALLATION
FIGURE 02A (SHEET 2)

2610T7004
A2614T1466
B2614T1466

CESSNA®
MODEL 208
 ILLUSTRATED PARTS CATALOG

FIG ITEM	PART NUMBER	NOMENCLATURE							UNITS PER ASSY
		1	2	3	4	5	6	7	
02A									
75	V200639	.	P	.	P	.	P	.	01
		.	A	.	A	.	A	.	
76	MS35206-217	.	S	.	S	.	S	.	03
77	L3-7	.	M	.	M	.	M	.	03 R
		.	C	.	C	.	C	.	
		.	*	.	*	.	*	.	
78	2601495-3	.	B	.	B	.	B	.	01
79	MS21069L04	.	N	.	N	.	N	.	03
80	2601495-5	.	B	.	B	.	B	.	01
81	MS21075L3N	.	N	.	N	.	N	.	03
82	2601495-7	.	L	.	L	.	L	.	01
		.	A	.	A	.	A	.	
83	AN565D4H3	.	S	.	S	.	S	.	02
		.	*	.	*	.	*	.	
84	2601495-10	.	R	.	R	.	R	.	01
85	S1105-3	.	B	.	B	.	B	.	01
86	AN315-3R	.	N	.	N	.	N	.	01
87	2613419-1	.	B	.	B	.	B	.	01
88	AN315-3L	.	N	.	N	.	N	.	01
89	S1105-3L	.	B	.	B	.	B	.	01
		.	A	.	A	.	A	.	
90	AN3-6	.	B	.	B	.	B	.	02
91	NAS1149F0332P	.	W	.	W	.	W	.	02
92	S1450-3-10-032	.	W	.	W	.	W	.	02
93	AN310-3	.	N	.	N	.	N	.	02
94	MS24665-172	.	C	.	C	.	C	.	02
		.	*	.	*	.	*	.	
95	MS21322-11	.	C	.	C	.	C	.	01
96		.	R	.	R	.	R	.	RF

- ITEM NOT ILLUSTRATED